

LFV  
CHANGE: TWY remark, editorial.



**ARP** 565549N 0144344E  
**AD ELEV** 610 FEET  
**LEGEND** See GEN 2.3  
 Dimensions in m, ELEV in ft

TWY NR	WIDTH	Surface Bearing strength	Day marking		Taxiway lighting	
			Centerline Holding	Edge Centerline	RGL Stopbar	
A	18 m	ASPH PCN 40 F/B/X/T	CL HLDG	EDGE	RGL	RGL
B	23 m	ASPH PCN 40 F/B/X/T	CL HLDG	EDGE	RGL	RGL
C	15 m	ASPH PCN 40 F/B/X/T	CL HLDG	EDGE	RGL	RGL

**REMARK:** 50% higher ACN accepted occasionally.

**INS Coordinates for Aircraft Stands**

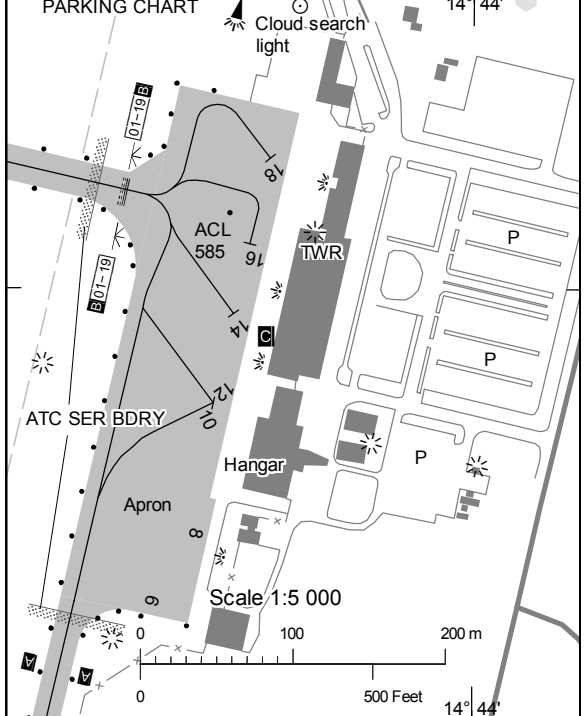
APRON Surface Bearing strength	NR	COORD	ELEV
ASPH PCN 40 F/B/X/T			

**REMARK:** 50% higher ACN accepted occasionally.

**AIP SWEDEN**  
  
**TWR** 118.150 MHz  
  
**AERODROME CHART - ICAO**  
**VÄXJÖ/Kronoberg**  
**AD 2 ESMX 2-1**

RWY NR	TRUE & MAG BRG	THR PSN Geoid undulation	Bearing strength	THR ELEV and highest ELEV of TDZ of precision APCH RWY	Declared distances				Approach and runway lighting				
					TORA	TODA	ASDA	LDA	APCH	THR TRID TDZ	VASIS (MEHT)	Edge	End
01	013.05° GEO 008° MAG	565511.72N 0144326.69E GUND 108 ft	PCN 40 F/B/X/T	THR 610 ft	2106	2606	2106	2106	SALS 420 m LIH	THR Green WBAR	PAPI Left/3.00° (45.3 ft)	2106/60 m White Caution zone 600 m yellow LIH	Red
19	193.06° GEO 188° MAG	565618.05N 0144354.82E GUND 107 ft	PCN 40 F/B/X/T	THR 563.1 ft TDZ 573 ft	2106	2406	2106	2106	Calvert Cat I 900 m LIH	THR Green WBAR	PAPI Left/2.86° (59.4 ft)	2106/60 m White Caution zone 600 m yellow LIH	Red

**REMARK:** 50% higher ACN accepted occasionally.



AIRAC AMDT 6/2015 12 NOV 2015